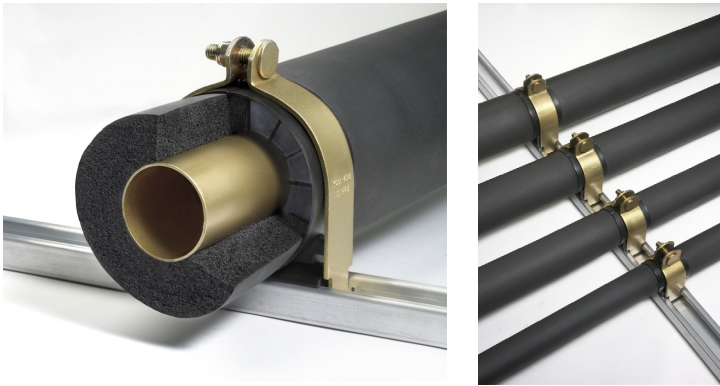


Klo-Shure® - Series 7



Klo-Shure®



Insulation
Partners

Coupling Series 7

Klo-Shure® - Series 7

Klo-Shure® eliminates having to double-wrap, glue and tape the insulation on strut-mounted clamps. Klo-Shure® insulation coupling reduces the time required to insulate copper tubing used for refrigerant lines. The patented clamp allows sections of closed-cell insulation to be secured at fixing points.

Features

- Reduces installation time
- Provides complete vapour barrier without gluing or taping
- Improves finished appearance
- Insulation wall thicknesses – 3/8", 1/2", 3/4" and 1"
- Pipe diameters from 1/4" up to 4-1/8"
- Manufactured by Hydra-Zorb

The Package

- Klo-Shure® Clamps Supplied in Packs of 10 •

Related Products

Dairy Cabinet Pump

Part Code	Insulation Wall Thickness				
	3/8"	1/2"	3/4"	1"	
Copper Pipe ID	1/4"	723025	–	726025	–
	3/8"	723037	724037	726037	–
	1/2"	723050	724050	726050	–
	5/8"	723062	724062	726062	728062
	3/4"	723075	724075	726075	–
	7/8"	723087	724087	726087	728087
	1"	723100	724100	–	–
	1-1/8"	723112	724112	726112	728112
	1-3/8"	723137	724137	726137	728137
	1-5/8"	723162	724162	726162	728162
	2-1/8"	723212	724212	726212	728212
	2-5/8"	–	724262	726262	728262
	3-1/8"	–	724312	726312	728312
	3-5/8"	–	724362	726362	728362
	4-1/8"	–	724412	726412	–

The Pump House sales team are available to answer your questions or queries on this product. Our experts are waiting for your call **+44 (0)115 900 5858** or if you prefer send an email to **sales@pumph.co.uk** or visit **www.pumph.co.uk**

